

Abstract

Influenza sentinel surveillance report in the Republic of Korea, 2020-2021

Jeongok Cha, Park Sujin, Yeoran Yun, Mincheol Jeon, Lee Donghan,

Division of Infectious Disease Control, Bureau of Infectious Disease Policy, Korea Disease Control and Prevention Agency (KDCA)

Kim Heui Man, Lee Nam-joo, Rhee Jee Eun, Kim Eun-jin

Division of Emerging Infectious Diseases, Bureau of Infectious Disease Diagnosis Control, KDCA

During the 2020-2021 influenza season (from Week 36 in 2020 to Week 35 in 2021), 199 clinical sites, 63 laboratory sites, and 219 inpatients sentinel sites were designated as sentinel institutions. The influenza-like illness patient rate (ILI) peaked at 3.3 per 1,000 outpatients at Week 46 of 2020 and then continued to decline and did not exceed the epidemic threshold, and no pandemic advisory was issued.

The reporting performance rate of the sentinel institutions was 98.4%, an increase of 0.4%p compared to the previous year (2019). The number of inpatients totaled 211 (1.0 per institution), a 98% decrease from the last season's total of 12,660 (59.4 per institution). As a result of the significant decrease in the number of influenza outbreaks this season, it due to an increase in attention personal hygiene due to COVID-19 such as wearing a mask, washing hands, coughing etiquette, etc. In addition, contacting between people has decreased due to social distancing and reduced overseas travel.

Keywords: Influenza, Influenza-Like Illness (ILI), Influenza Sentinel Surveillance

Table 1. Sentinel sites in Korean Influenza Surveillance, 2020–2021

Region	ILI ^a sentinel sites	Laboratory monitoring sentinel sites	Inpatient monitoring sentinel sites
Total	199	63	219
Seoul	37	6	43
Busan	11	4	18
Daegu	10	3	8
Incheon	11	4	14
Gwangju	7	3	5
Daejeon	6	2	8
Ulsan	6	3	2
Sejong	2	2	1
Gyeonggi	43	7	43
Gangwon	6	3	8
Chungbuk	6	3	9
Chungnam	6	4	9
Jeonbuk	8	4	10
Jeonnam	8	4	9
Gyeongbuk	13	3	13
Gyeongnam	14	4	12
Jeju	5	4	7

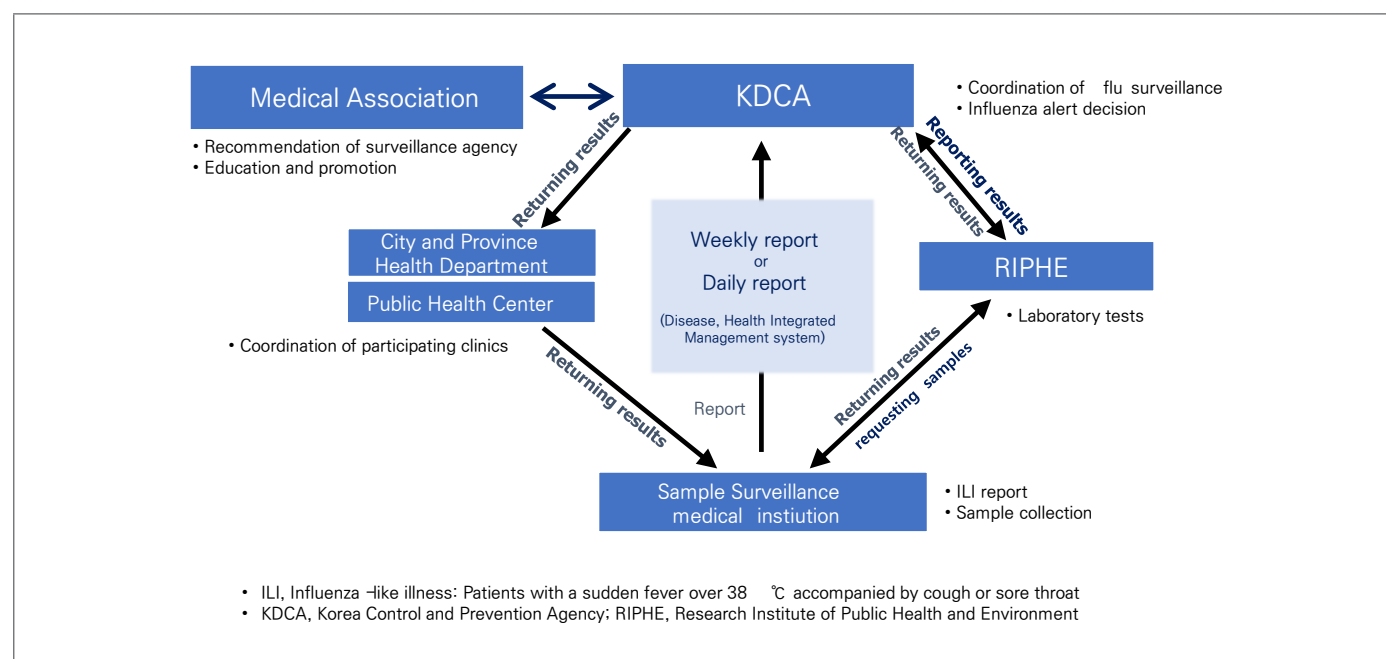
^a ILI, influenza-like illness

Figure 1. The influenza sentinel surveillance system in the Republic of Korea

Table 2. Weekly reporting rate (%)^a of the Korean Influenza Surveillance System

Season	Overall	Public health centers	Private clinics
2020-2021	98.4		98.4
2019-2020	98.0	—	98.0
2018-2019	98.3	—	98.3
2017-2018	96.3	—	96.3
2016-2017	98.0	—	98.0
2015-2016	98.8	—	98.8
2014-2015	99.0	—	99.0
2013-2014	97.5	—	97.5
2012-2013	99.7	—	99.7
2011-2012	98.8	—	98.8
2010-2011	91.9	—	91.9
2009-2010	77.5	—	77.5
2008-2009	79.5	72.6	84.2
2007-2008	76.2	80.5	73.8
2006-2007	75.9	83.5	71.9
2005-2006	72.8	82.2	67.9
2004-2005	62.2	77.3	55.4
2003-2004	70.3	81.3	64.1
2002-2003	61.8	69.4	57.1
2001-2002	53.0	63.5	46.8
2000-2001	45.1	56.6	38.2

^a The weekly reporting rates (%): (The no. of weekly reporting clinics / The no. of total clinics) × 100

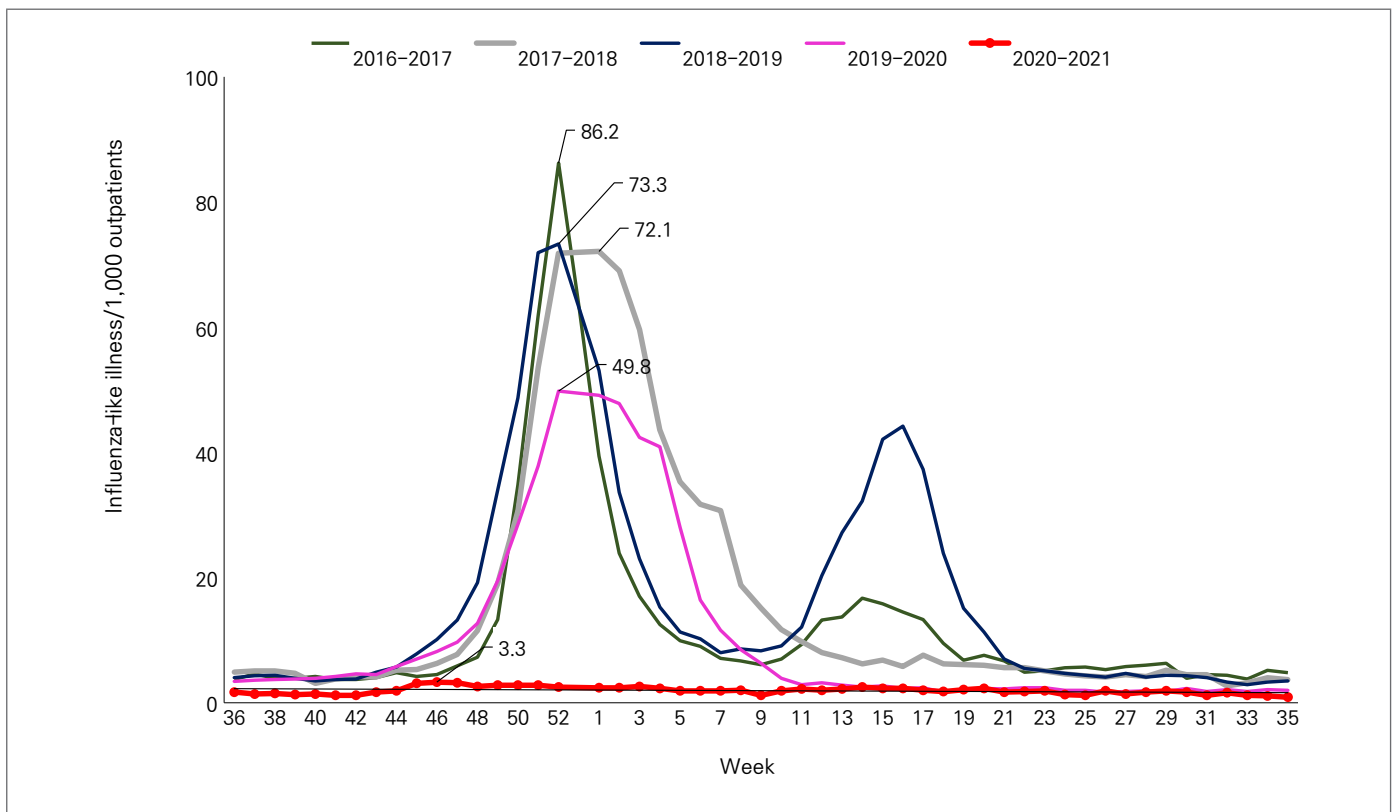


Figure 2. Weekly Influenza-like illness (ILI) consultation rates from the 2016–2017 influenza season to the 2020–2021 influenza season

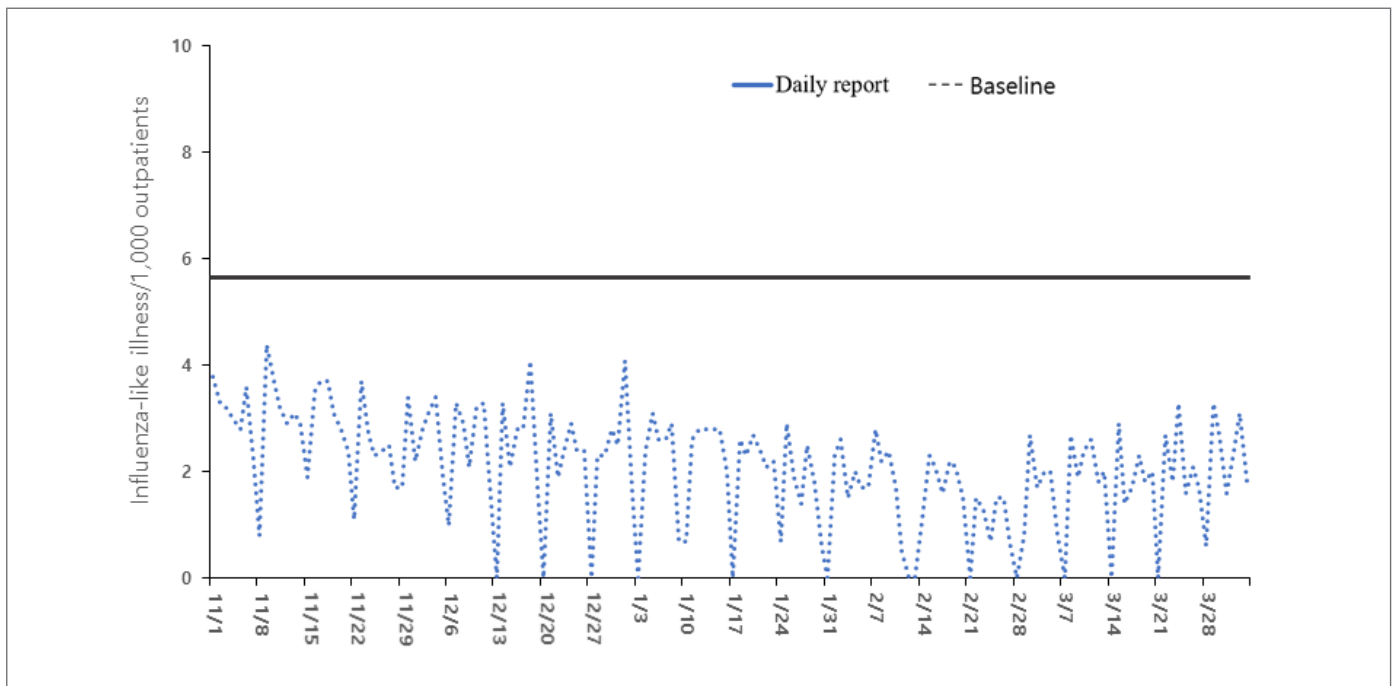


Figure 3. Daily Influenza-like illness (ILI) consultation rates during the 2020–2021 influenza season

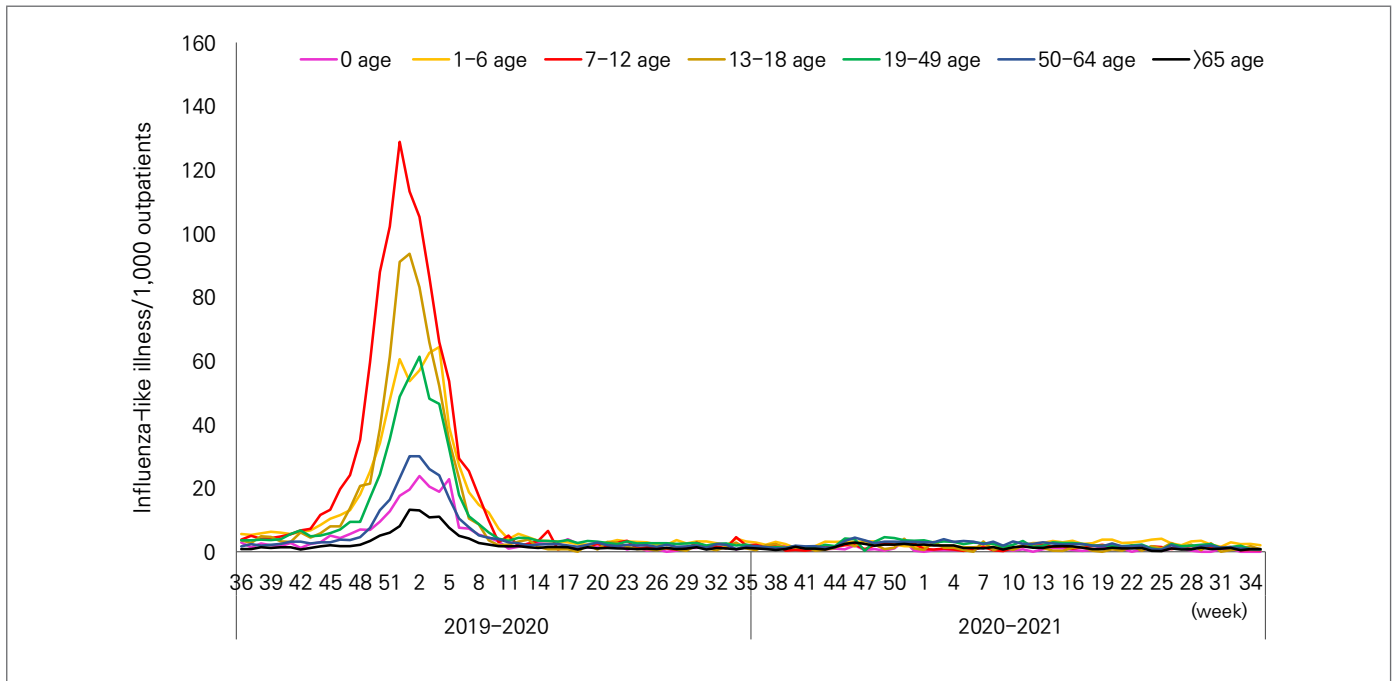


Figure 4. Influenza-like illness (ILI) consultation rates by age group (2019–2020~2020–2021 season)

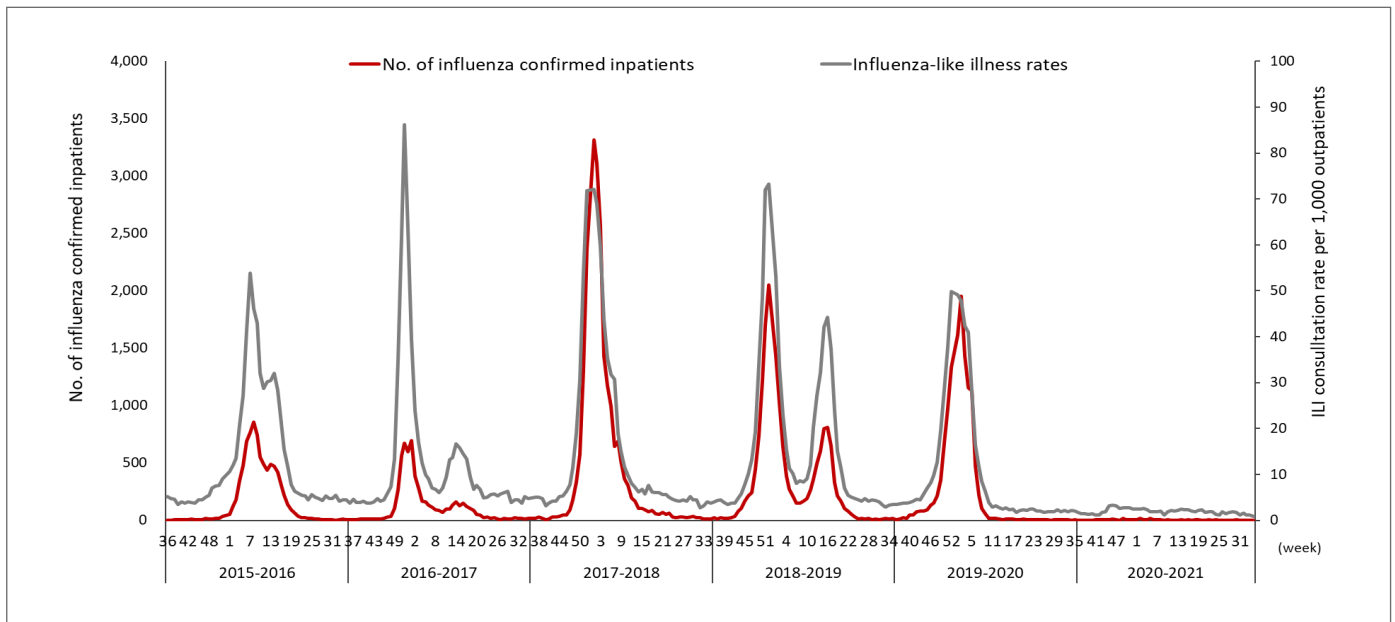


Figure 5. The number of confirmed influenza inpatients and the influenza-like illness (ILI) rates of the 2015–2016 influenza season to the 2020–2021 influenza season

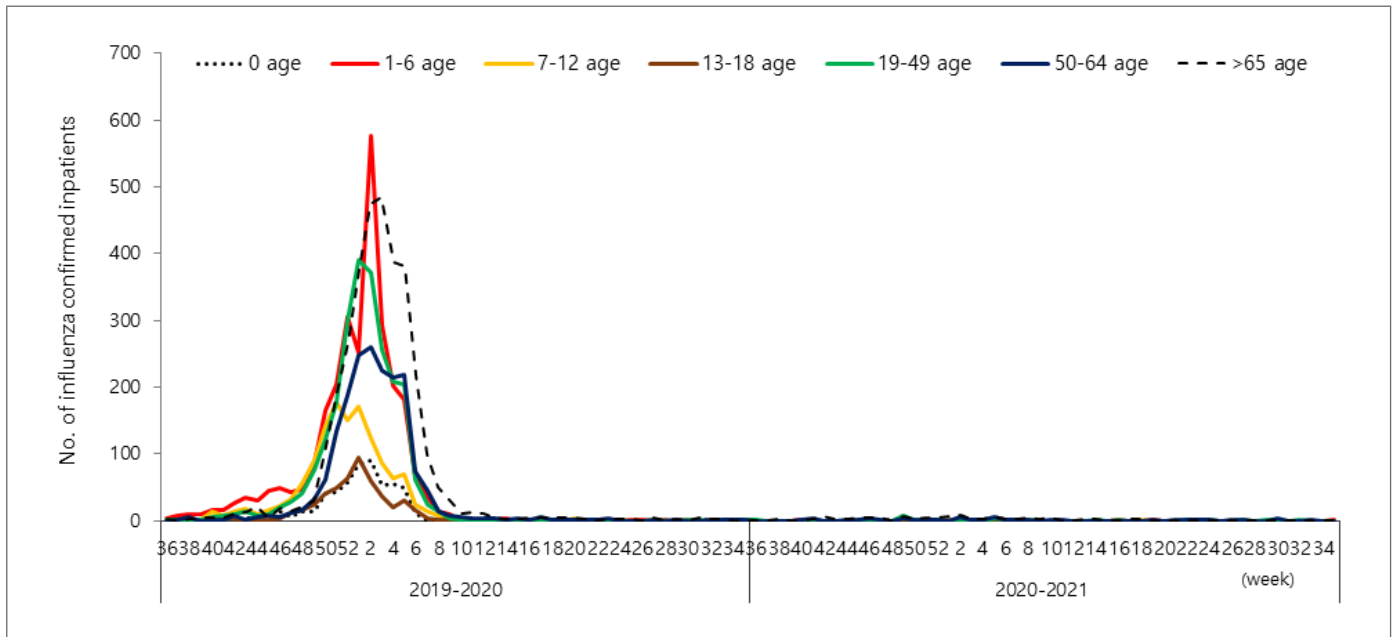


Figure 6. The number of influenza confirmed inpatients by age group