

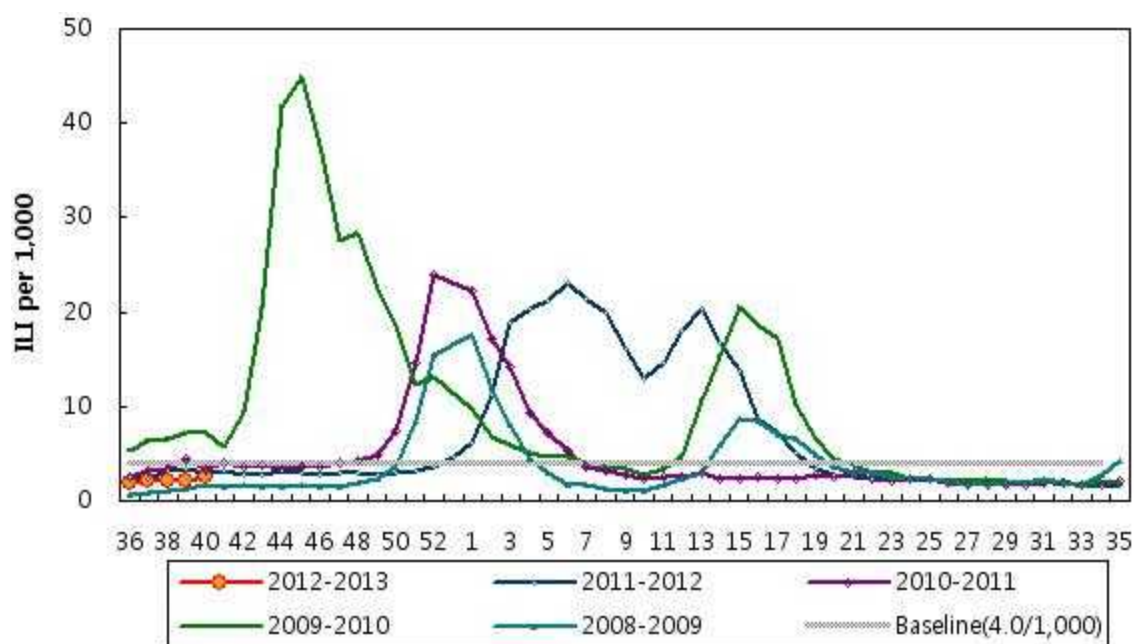
Influenza Weekly Report

Week 40 2012 – September 30, 2012 ~ October 6, 2012¹

Korean Influenza Surveillance Scheme, Korea Center for Disease Control and Prevention

Weekly Influenza like Illness Proportion

The overall proportion of patients, who visited sentinel physicians for influenza-like illness (ILI) was 2.5‰ for week 40. This permillage is below the national baseline of 4.0‰.



¹This information had been collected by October 11, 2012

Weekly Report of Influenza Virus Isolation, 2012-2013

2 influenza viruses were isolated until the 40th week in 2012-2013 season. 2

viruses were identified as A/H3N2.

