

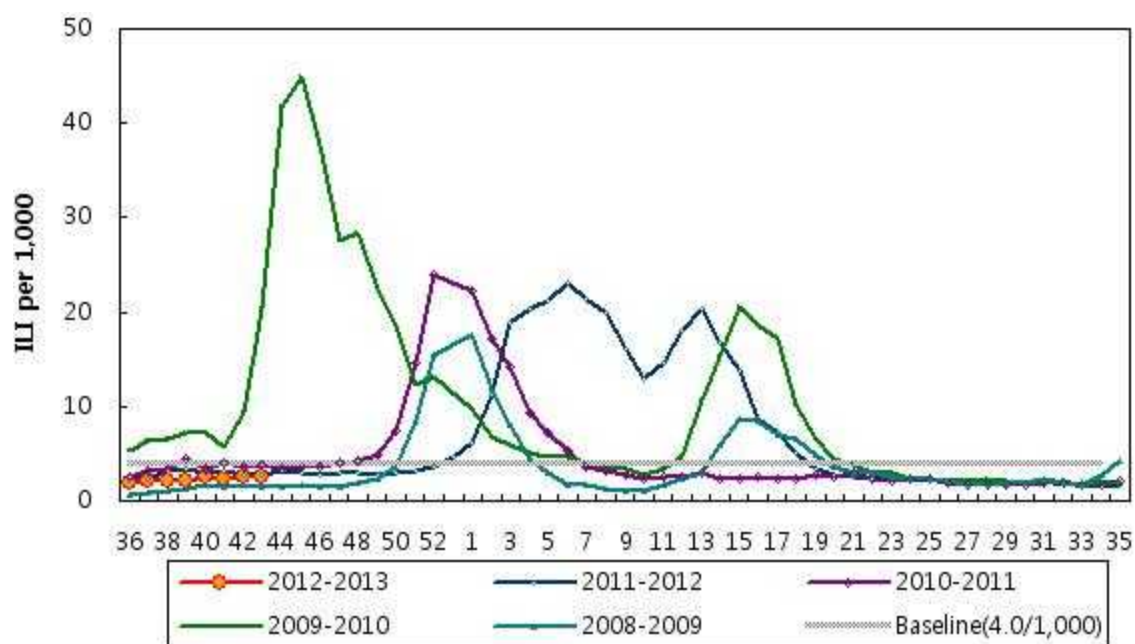
# Influenza Weekly Report

Week 43 2012 – October 21, 2012 ~ October 27, 2012<sup>1</sup>

Korean Influenza Surveillance Scheme, Korea Center for Disease Control and Prevention

## Weekly Influenza like Illness Proportion

The overall proportion of patients, who visited sentinel physicians for influenza-like illness (ILI) was 2.5‰ for week 43. This permillage is below the national baseline of 4.0‰.



<sup>1</sup>This information had been collected by November 1, 2012

## Weekly Report of Influenza Virus Isolation, 2012–2013

2 influenza viruses were isolated until the 43<sup>th</sup> week in 2012-2013 season. 2 viruses were identified as A/H3N2.

