

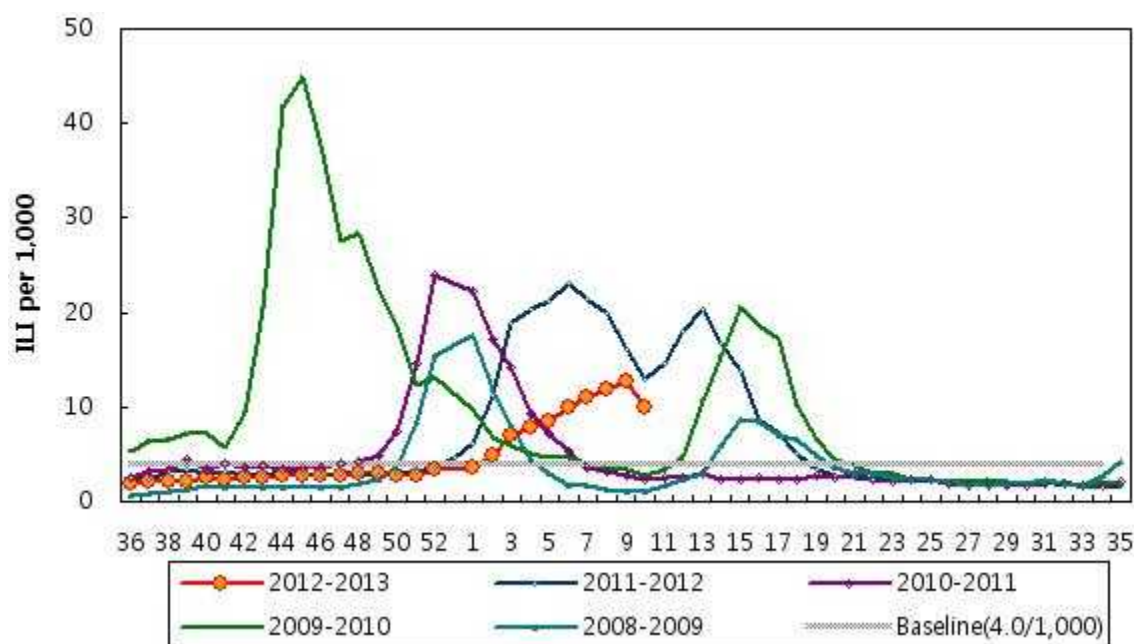
Influenza Weekly Report

Week 10 2013 – March 3, 2013 ~ March 9, 2013¹

Korean Influenza Surveillance Scheme, Korea Center for Disease Control and Prevention

Weekly Influenza like Illness Proportion

The overall proportion of patients, who visited sentinel physicians for influenza-like illness (ILI) was 9.9‰ for week 10. This permillage is above the national baseline of 4.0‰.



¹This information had been collected by March 14, 2013

Weekly Report of Influenza Virus Isolation, 2012–2013

1,151 influenza viruses were isolated until the 10th week in 2012-2013 season.

858 viruses were identified as A/H3N2, 266 viruses were identified as

A/H1N1pdm09 and 27 viruses were identified as B.

