

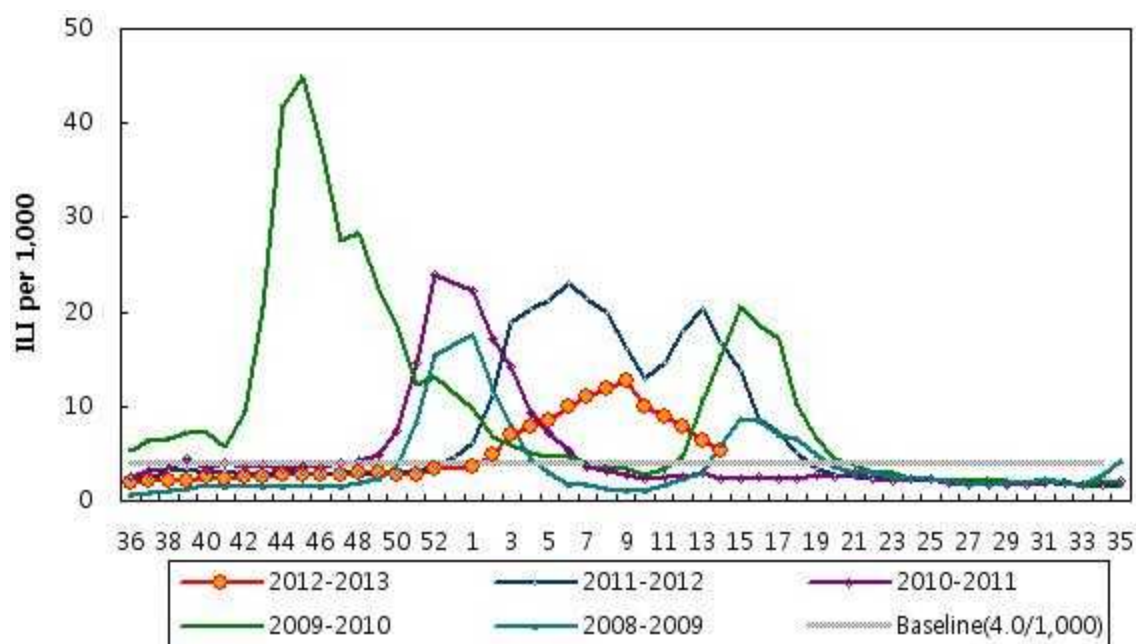
Influenza Weekly Report

Week 14 2013 – March 31, 2013 ~ April 6, 2013¹

Korean Influenza Surveillance Scheme, Korea Center for Disease Control and Prevention

Weekly Influenza like Illness Proportion

The overall proportion of patients, who visited sentinel physicians for influenza-like illness (ILI) was 5.3‰ for week 14. This permillage is above the national baseline of 4.0‰.



¹This information had been collected by April 11, 2013

Weekly Report of Influenza Virus Isolation, 2012–2013

1,508 influenza viruses were isolated until the 14th week in 2012-2013 season.

1,160 viruses were identified as A/H3N2, 308 viruses were identified as

A/H1N1pdm09 and 40 viruses were identified as B.

