

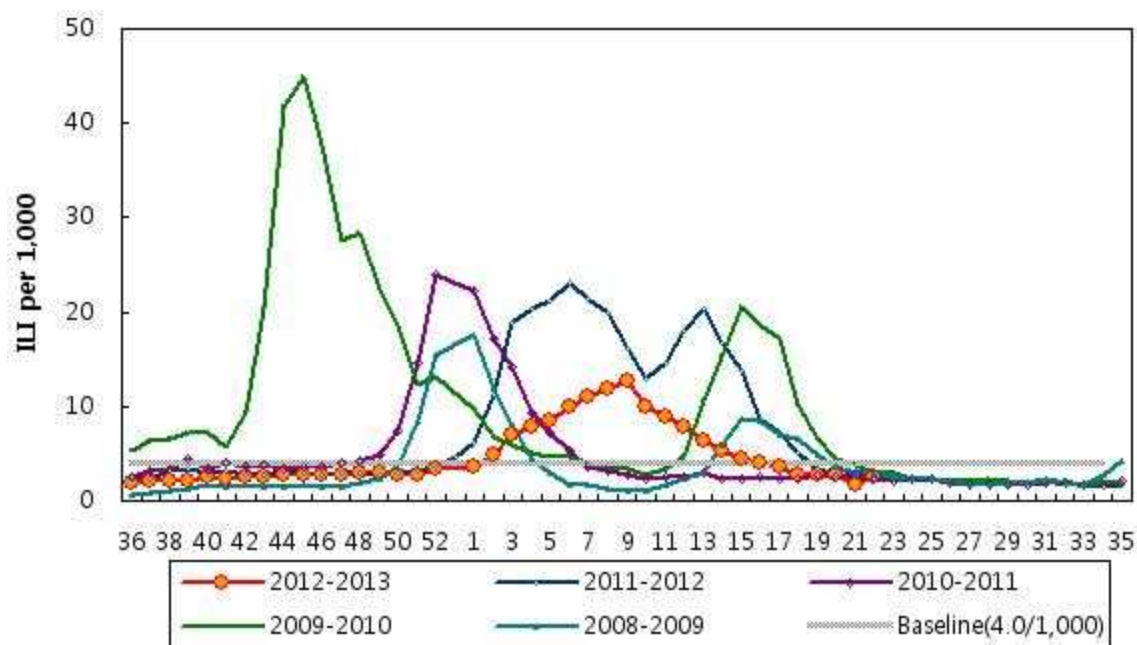
Influenza Weekly Report

Week 22 2013 – May 26, 2013 ~ June 1, 2013¹

Korean Influenza Surveillance Scheme, Korea Center for Disease Control and Prevention

Weekly Influenza like Illness Proportion

The overall proportion of patients, who visited sentinel physicians for influenza-like illness (ILI) was 2.5‰ for week 22. This permillage is below the national baseline of 4.0‰.



¹This information had been collected by June 5, 2013

Weekly Report of Influenza Virus Isolation, 2012–2013

1,695 influenza viruses were isolated until the 22th week in 2012-2013 season.

1,274 viruses were identified as A/H3N2, 331 viruses were identified as

A/H1N1pdm09 and 90 viruses were identified as B.

